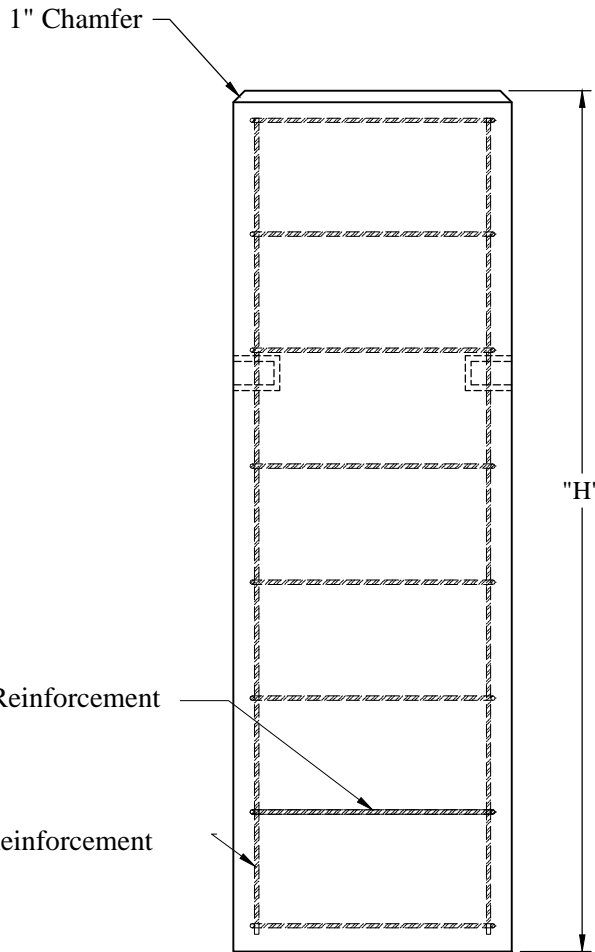
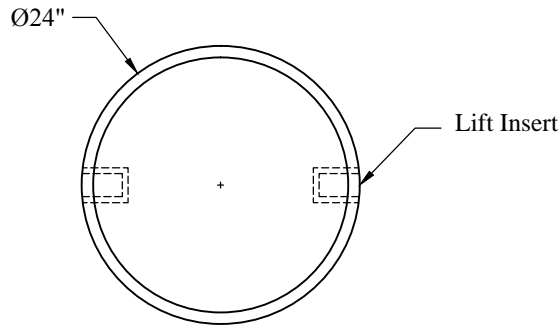


1-800-639-2199

Fax (603) 224-2927

Light Pole Bases\Piers\24 Inch Dia Piers (v)



Horizontal Reinforcement

Vertical Reinforcement

Height	Weight	P/N:
4'-0"	1,870 lbs	PIER-24R4
4'-6"	2,100 lbs	PIER-24R4.5
5'-0"	2,340 lbs	PIER-24R5
5'-6"	2,575 lbs	PIER-24R5.5
6'-0"	2,810 lbs	PIER-24R6
6'-6"	3,040 lbs	PIER-24R6.6
7'-0"	3,275 lbs	PIER-24R7
7'-6"	3,510 lbs	PIER-24R7.5
8'-0"	3,745 lbs	PIER-24R8
8'-6"	3,980 lbs	PIER-24R8.5
9'-0"	4,215 lbs	PIER-24R9
9'-6"	4,450 lbs	PIER-24R9.5
10'-0"	4,680 lbs	PIER-24R10
10'-6"	4,915 lbs	PIER-24R10.5
11'-0"	5,150 lbs	PIER-24R11

General Notes

1. Concrete: $f_c = 4,000$ PSI @ 28 Days Minimum
2. Reinforcing Steel Conforms to Latest ASTM Specifications:
ASTM A615 Grade 60 Rebar Black Deformed Bars

Phoenix
Precast
Products

**24" Diameter
Pier**

Phoenix Precast Products

Phoenix Precast Products